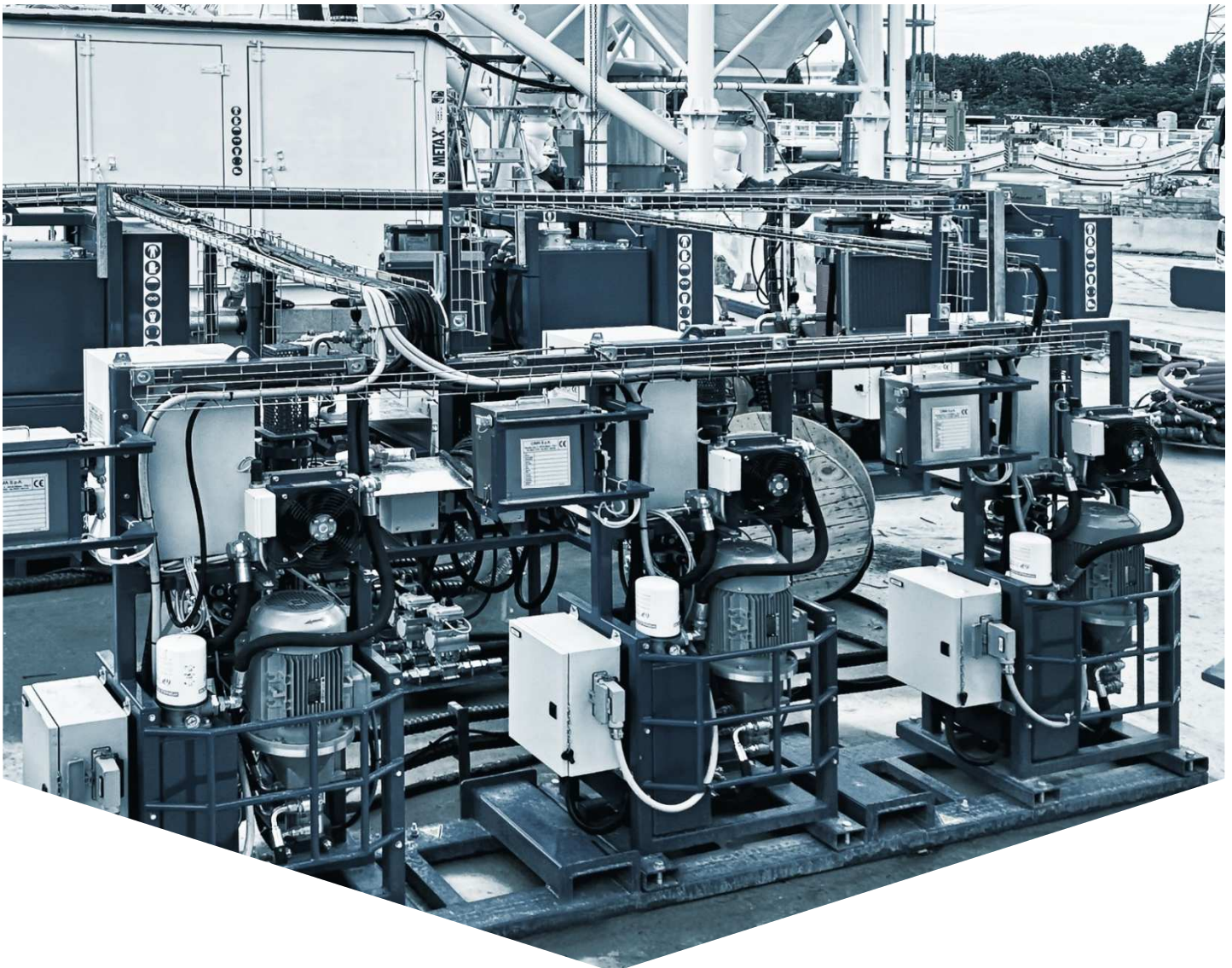


# IP Range



# Vertical IP Range

## TECHNICAL FEATURES

Vertical Pumps		IP90V	IP90-2V	IP100V	Option 1	IP120V Option 2	Option 3
Application	Compaction	✓	✓	–	✓	✓	✓
	Compensation	✓	✓	–	–	–	–
	Micropiles	✓	✓	✓	✓	✓	✓
	Chemical	✓	✓	✓	✓	✓	✓
	Transferring	✓	✓	✓	✓	✓	✓
	Mud feeding	–	–	–	–	–	–
	Jet Grouting (JET3)	–	–	✓	–	–	–
Input power	kW	5,5   7,5	11	45	7,5	7,5	10
	hp	7,5   10	15	60	10	10	13,5
Plunger	Single effect	–	✓	–	–	–	–
	Double effect	✓	–	✓	✓	✓	✓
Plunger Ø	mm	88,9	2x90	2x100	120	120	120
	in	3,54	2x3,54	2x3,94	4,72	4,72	4,72
Stroke	mm	200	200	300	200	200	200
	in	7,9	7,9	215	7,9	7,9	7,9
Max delivery	l/min	38	40	170	80	63	80
	gpm	10	10,5	37,4	21	16,6	21
Max pressure	bar	100   120	100	230	85	85	100
	PSI	1450   1740	1450	3330	1200	1200	1450
Injection delivery	l/min	35	40	–	65	65	65
	gpm	9,2	10,5	–	17,1	17,1	17,1
Injection pressure	bar	60	50	–	65	65	65
	PSI	870	725	–	942	942	942
Suction Ø	mm	38,1	63,5	38,1	31,8	31,8	31,8
	in	1½	2,5"	1½	1¼	1¼	1¼
Output Ø	mm	25,4	50,8	101,6	25,4	50,8	50,8
	in	1"	2"	4"	1"	2"	2"
Overall Dimensions	m	0,79x0,6x1,77	1,2x2,86x2,20	0,8x1,26x2,07	0,79x0,6x1,77	0,79x0,6x1,77	0,79x0,6x1,77
	ft   in	2'7"x2'x5'10"	3'11"x9'5"x7'3"	2'7"x4'2"x6'9"	2'7"x2'x5'10"	2'7"x2'x5'10"	2'7"x2'x5'10"
Weight	kg	350	1150	2800	390	390	390
	lb	770	2530	6170	860	860	860

✓ Available

All technical data are purely indicative  
and subject to change without notice

Horizontal IP Range								
TECHNICAL FEATURES								
Horizontal Pumps		IP75H	IP90H		IP115H	IP140H	IP190H	
Application	Compaction	✓	✓	✓	✓	–	–	–
	Compensation	–	–	–	–	–	–	–
	Micropiles	✓	✓	✓	✓	✓	✓	✓
	Chemical	✓	✓	✓	–	–	–	–
	Transferring	✓	✓	✓	✓	✓	✓	✓
	Mud feeding	✓	✓	✓	✓	✓	✓	✓
	Jet Grouting (JET3)	✓	✓	✓	✓	✓	–	–
Input power	kW	18	22	45	30	45   75	45	75
	hp	24,5	30	61,2	41	61,2   101	61,2	101
Plunger	Single effect	–	–	–	–	–	–	–
	Double effect	✓	✓	✓	✓	✓	✓	✓
Plunger Ø	mm	88,9   100   114,3	88,9   100   114,3	88,9   100	88,9   100   115	115   127   140	139,7   165,1   190,5	139,7   165,1   190,5
	in	3,5   3,9   4,5	3,5   3,9   4,5	3,5   3,9	3,5   3,9   4,5	3,5   5   5,5	5,5   6,5   7,5	5,5   6,5   7,5
Stroke	mm	320	330	330	330	330	330	330
	in	13	13	13	13	13	13	13
Max delivery	l/min	123   150   201	123   150   201	100   125	123   154   205	280   380   435	400   565   750	60   40   30
	gpm	31,7   39,6   55,5	31,7   39,6   55,5	26   40	32,4   40,7   54,2	74   100,3   115	105,7   149,3   198	16   11   8
Max pressure	bar	80   65   45	80   70   50	200   150	125   100   75	100   90   40	60   50   30	140   165   190
	PSI	1150   940   650	1150   1015   725	2900   2200	1810   1450   1085	1450   1305   580	870   725   435	2030   2400   2750
Suction Ø	mm	63,5	63,5	63,5	63,5	76,2   101,6	101,6	101,6
	in	2,5"	2,5"	2,5"	2,5"	3"   4"	4"	4"
Output Ø	mm	38,1	38,1   50,8	38,1   50,8	31,75	38,1   76,2	50,8   101,6	50,8   101,6
	in	1"	1"   2"	1"   2"	1,25"	1,5"   3"	2"   4"	2"   4"
Overall Dimensions	m	0,8x2,2x1,3	0,8x2,2x1,3	0,8x2,2x1,3	0,9x2,75x2,1	1,2x2,2x2,5	1,08x2,98x2,1	1,08x2,98x2,1
	ft   in	2'7"x7'2"x4'3"	2'7"x7'2"x4'3"	2'7"x7'2"x4'3"	2'9"x9'x6'9"	3'11"x7'3"x7'5"	3'5"x9,8'x6'9"	3'5"x9,8'x6'9"
Weight	kg	1100	1100	1350	1700	1600	2600	2600
	lb	2425	2425	2980	3750	3530	5730	5730

✓ Available

All technical data are purely indicative and subject to change without notice



# With you on the Job-Site

